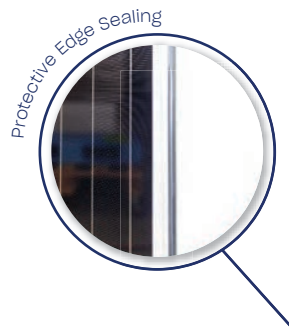


SOLID Pro

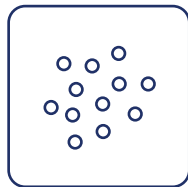
Glass / Glass

60 Cell

Frameless



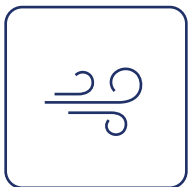
Self-cleaning effect



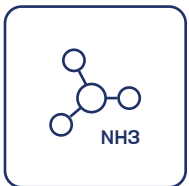
Salt mist resistance



Fire class A



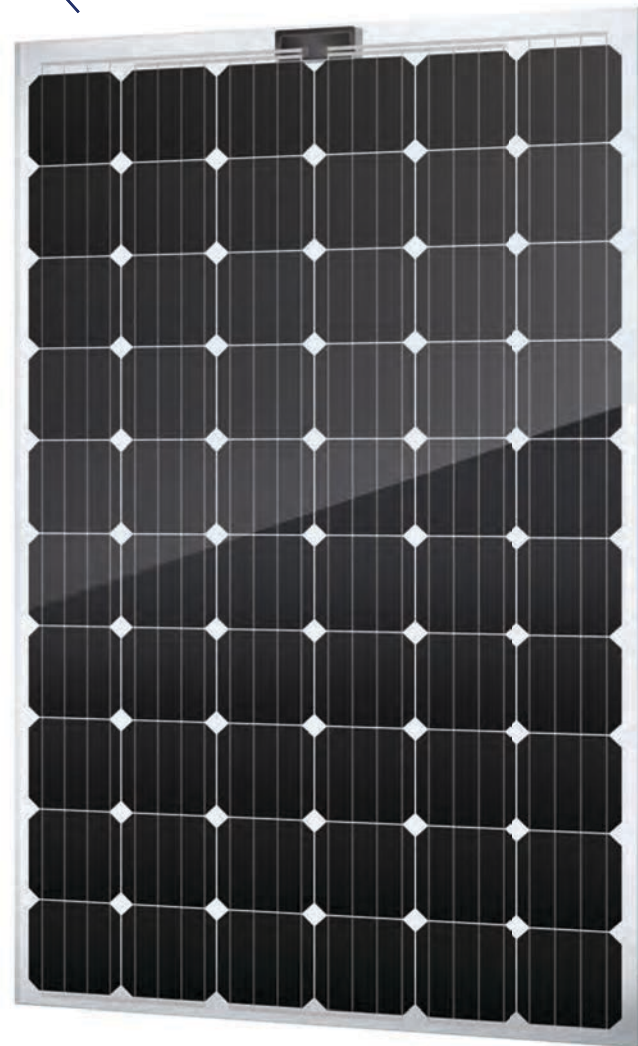
Dust & Sand resistance



Ammonia resistance



Extreme load resistance



Positive sorting up to +5W

SOLITEK

Mokslininku str. 6A,
Vilnius 08412, Lithuania
Tel. +370 5 263 8774
info@solitek.eu
www.solitek.eu

Mono ⚡ 310W

30

Product warranty

87%

Power guarantee

30

Efficiency guarantee

Electrical data (STC*)	
Maximum Power	310
Cell Technology	Mono C-Si
Open circuit voltage (V_{oc}/V)	41,02
Short circuit Current (I_{sc}/A)	9,71
Max Power Voltage (V_{mpp}/V)	33,48
Max Power Current (I_{mpp}/A)	9,31
Module Efficiency (η)	18,71%
Max System Voltage (V)	1500
Max Current (A)	15
Power Tolerance	0/+5W

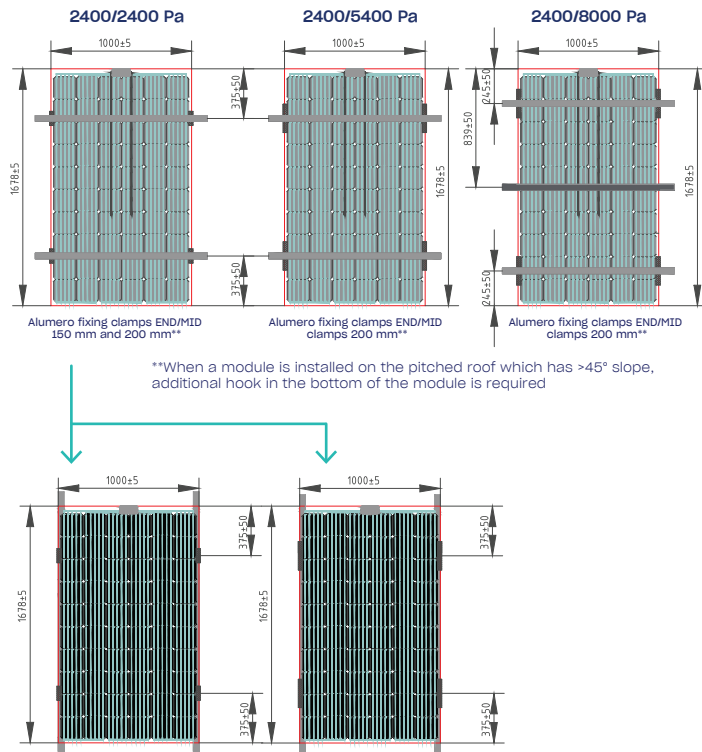
*Under Standard Test Conditions (STC) of irradiance of 1000W/sq. m., spectrum AM 1.5 and cell temperature of 25 C

Flash testing measurement accuracy of +/- 5% All transparency values are approximate +/- 3%

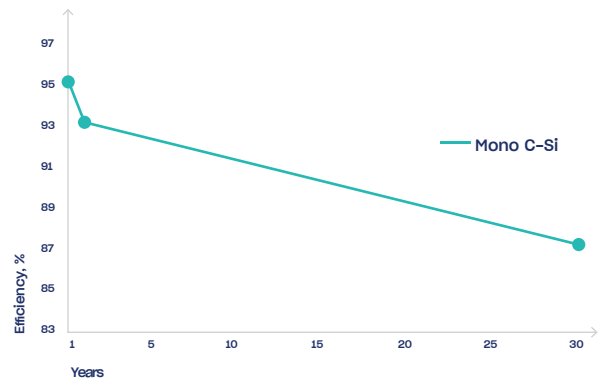
Temperature ratings	
Monocrystalline	
Current temperature coefficient (α)	+0,04 /° C
Voltage temperature coefficient (β)	-0,35 /° C
Power temperature coefficient (δ)	-0,47 /° C
Nominal Operating Module Temperature	46° C

Mechanical data	
Dimensions (LxWxH) (mm)	1670x992x7,1
Dimensions with edge sealing (LxWxH) (mm)	1678x5x1000+5x7,1
Weight (kg)	27
Front / Back glass (mm)	3,15
Cell Type	Mono C-Si
Cell Size (mm)	156x156
Transparency %	10
Cell configuration	6x10
Busbars	5
Frame	Frameless
Operating Temperature (°C)	-40 ÷ +85
Max Load (wind/snow) (Pa)	2400/8000
Junction Box / IP Class	IP68
Cable Cross Section Size (mm ²)	4
Bypass Diodes	3
Connector	MC4

Dimensions & Mounting



Power output warranty



Attention

- Always check if your system is compatible with local environmental conditions (wind/snow load, temperatures) on your site to ensure safety and long-term energy production.
- Do not connect differently orientated PV panels in the same string / MPPT of the inverter (unless optimizers are used).
- Do not connect strings with an unequal amount of PV panels in one MPPT (unless optimizers are used).
- Use PV panels of same electrical parameters in one string/MPPT (unless optimizers are used).
- Always ensure that your inverter is equipped with DC disconnect. If not it is recommended to install it externally.
- Never let different metals come in contact with each other. Use bi-metallic plates or plastic separators to eliminate galvanic corrosion.
- It is highly recommended to install SPD's in both AC and DC circuits because overvoltages void the warranty for inverters and also panels if they are harmed.
- It is highly recommended to ground PV panels mounting system and to install lightning protection in site.

Tips for Better Power Output

- Better module ventilation and shorter connection cables increase electrical energy production.
- Always observe object/mutual shading in site. Shading can drastically cut electrical energy generation output.



This datasheet is not legally binding. The manufacturer reserves the right to make changes to product specifications and/or product features without prior notice. The most recent versions of all documents (T&C's, datasheets, warranties, and installation manuals) can always be found on our website at www.solitek.eu.

Certificates and memberships

